



fa

Winter Chiller

MARCH 26-27, 2022

CHJA Approved
At

Hobby Horse Farms



www.HobbyHorseFarmco.com

5220 Bella Rosa Parkway
Firestone, Co 80504

**PreEntry DEADLINE:
Wednesday March 23,
2021 at 1PM**

Information: Kaite- 720-298-0908

Winter Chiller- March 26&27, 2022

Judge: Dan Schiefen

USEF Show Steward: tbd

Show Manager: Kaite Lorentz
720-298-0908

Course Designer: Jenny Alsberg

Show Secretary: Annette Cyboron
720-341-5811

Announcer: TBD

Paddock: TBD

Stabling: Fiona Wheelon

Veterinarian: Heritage Equine Clinic (on call) 303-578-5898
VetWRX (on call) 303- 569-4828

Farrier: TBD

EMT: TBD

Concession: What the Fork food truck

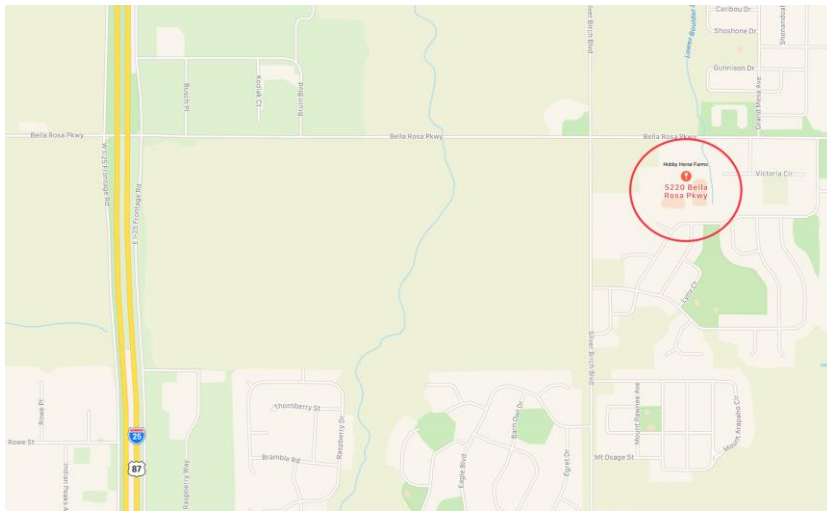
Crew: Hobby Horse Staff



Location and Directions

Hobby Horse Farms

5220 Bella Rosa Parkway
Firestone Colorado
80504



Denver- North on I-25, take Highway 52 exit east (right) to Silver Birch. Take Silver Birch north (left) to Bella Rosa Parkway (3rd stop sign). Take Bella Rosa Parkway east (right) to the first driveway on the right (Hobby Horse Farms).

Boulder- Highway 52 east to Silver Birch (1 mile east of I-25) and proceed as above.

Ft. Collins- South on I-25, take the Highway 119 exit and go 1 mile east (left) to Silver Birch. Take Silver Birch south (right) to Bella Rosa Parkway. Turn east (left) on Bella Rosa and turn right into the first driveway at Hobby Horse Farms.

Longmont-take Highway 119 east to Silver Birch and proceed as above from Ft. Collins

WARNINGS

WARNING: Under Colorado Law, an equine professional is not liable for any injury to or the death of a participant in equine activities resulting from inherent risks of equine activities, pursuant to **Section 13-21-119**, Colorado Revised Statutes.

Hobby Horse Farms, and Winter Chiller Show, will in no way be responsible for any loss or accident which may occur by fire or otherwise and it shall be a condition of entry that each exhibitor hold Hobby Horse Farms and Winter Chiller Show, harmless for any damage or loss that may occur to any animals, vehicles, or persons.



Class Specifications

All classes will be conducted in accordance with the current CHJA Rules & Specifications. USEF rules will govern in all instances except where CHJA specifications adjust for local situations.

-For complete CHJA class descriptions please refer to the 2022 CHJA Rule Book. For membership renewal and horse recording forms.

Please visit : www.CHJA.org

Show Rules

1. Regulated schooling will start at 7:00 am and will continue until 8:15am and will be permitted in designated areas ONLY. Management will supervise. Hard hats, and shoes or boots with distinctive heel, must be worn at all times by all exhibitors or riders while on horseback anywhere on the show grounds. Juniors must wear headgear which meets the USEF standards with harnesses secured. Courses will be posted and available one hour before the start of classes. One-minute gate and dotted line may be enforced.
2. No refunds will be given unless accompanied by a veterinarian's certificate. Non-showing horse policy: Only an EMT Fee and Office Fee will be charged if the horse schools and does not show.
3. All dogs must be leashed.
4. EMT will be present for schooling and the duration of the horse show.

5. Each class will award a first place prize and ribbons through 6 place. Champion and Reserve Champion will be offered in all divisions.

6. Show management reserves the right to cancel, combine or divide any class or classes.

Stabling

A limited number of stalls are available.

Arrangements can be made with Kaite at 720-298-0908

Biosecurity and health requirements

It is Hobby Horse Farms policy to require a current Health Certificate and current coggins (within the last calendar year) for all horses trailering onto the property. A current health certificate is considered to be within 90 days of the competition. If there is an outbreak of an infectious disease, however, these policies will change depending on the disease's incubation period. Please stay updated via our website www.HobbyHorseFarmCO.com , CHJA.org, and/or our Facebook page.



Fees

Checks payable to: **Hobby Horse Farms.**

Classes	\$20
Medal Classes	\$25
EMT Fee per rider	\$15
Office Fee per entry	\$25
Stalls per day	\$35
Grounds Fee (Charged to horses without a stall)	\$15
Late Fee applied 1pm Wednesday March 23, 2021	\$25

- Grounds fee waived for horses stabled at Hobby Horse Farms
- Late fees are nonrefundable, but as classes are canceled or asked to be filled, the charge for entered classes may be dismissed.
- Show scratches are not refunded the stall fee if they were present at the show and stalled there.
- Any returned checks must be paid in cash or certified funds within 10 days

Horse Show Information

Entries – one horse per entry blank.
Any returned checks must be paid in cash or certified funds within 10 days

Please note: Entries must be received by Wednesday , March 23, 2022, 2:00 PM to avoid the late fee.

Mail entries to:

Hobby Horse Farms

5220 Bella Rosa Parkway Firestone, CO 80504

Or email entries to:

Events@HobbyHorseFarmCO.com

***PAID SCHOOLING AVAILABLE FRIDAY March 25, BY RESERVATION ONLY!* Paid schooling is \$25 per horse, haul in can be scheduled with Kaite 720-298-0908**

Class List



Saturday March 26 – 8:30 A.M.

1. Red and Blue Warm Up
2. CHJA Low Adult Hunter
3. CHJA Low Adult Hunter
4. CHJA Low Adult Equitation, O/F
5. CHJA Low Adult Equitation, O/F
6. CHJA Low Adult Equitation, Flat
7. CHJA Low Adult Hunter, U/S
8. Columbine Adult Medal

15 minute Schooling break

9. CHJA Low Children's Hunter
10. CHJA Low Children's Hunter
11. CHJA Low Children's Equitation, O/F
12. CHJA Low Children's Equitation, O/F
13. CHJA Low Children's Equitation, Flat
14. CHJA Low Children's Hunter, U/S
15. Columbine Junior Medal

15 Minute Schooling break

16. CHJA Long Stirrup Hunter
17. CHJA Long Stirrup Hunter
18. CHJA Long Stirrup Equitation, O/F
19. CHJA Long Stirrup Equitation, O/F
20. CHJA Long Stirrup Equitation, flat
21. CHJA Long Stirrup Hunter, U/S
22. CHJA Long Stirrup Medal

15 Minute Schooling Break

23. CHJA Short Stirrup Hunter
24. CHJA Short Stirrup Hunter
25. CHJA Short Stirrup Equitation, O/F
26. CHJA Short Stirrup Equitation, O/F

27. CHJA Short Stirrup Equitation, flat
28. CHJA Short Stirrup Hunter, U/S
29. CHJA Short Stirrup Medal

15 Minute Schooling Break

30. CHJA Medium Stirrup Hunter
31. CHJA Medium Stirrup Hunter
32. CHJA Medium Stirrup Equitation, O/F
33. CHJA Medium Stirrup Equitation, O/F
34. CHJA Medium Stirrup Equitation, flat
35. CHJA Medium Stirrup Hunter, U/S
36. CHJA Medium Stirrup Medal

Sunday March 27- 8:30 A.M.

37. Red and Blue Warm Up
38. Pile of Poles Outreach Hunter Walk Trot
39. Pile of Poles Outreach Equitation Walk Trot
40. Pile of Poles Outreach H/U
41. Pile of Poles Eq on the Flat

15 Minute Schooling Break

42. Cross Rails Outreach Hunter
43. Cross Rails Outreach Hunter
44. Cross Rails Outreach Equitation
45. Cross Rails Outreach Equitation
46. Cross Rails Outreach H/U
47. Cross Rails Outreach Eq on the Flat
48. 18" Outreach Hunter
49. 18" Outreach Hunter
50. 18" Outreach Equitation
51. 18" Outreach Equitation
52. 18" Outreach H/U
53. 18" Outreach Eq on the Flat



- 54. 2' Outreach Hunter
- 55. 2' Outreach Hunter
- 56. 2' Outreach Equitation
- 57. 2' Outreach Equitation
- 58. 2' Outreach H/U
- 59. 2' Outreach Eq on the Flat

ARENA RESET AND SCHOOLING BREAK

Jumpers will not start before 11AM

- 60. Clear Round Jumper Warm Up
- 61. CHJA 0.70 M Jumper
- 62. CHJA 0.70 M Jumper
- 63. CHJA 0.70 M Jumper
- 64. CHJA 0.75 M Jumper
- 65. CHJA 0.75 M Jumper
- 66. CHJA 0.75 M Jumper
- 67. CHJA 0.85 M Jumper
- 68. CHJA 0.85 M Jumper
- 69. CHJA 0.85 M Jumper
- 70. CHJA 0.90 M Jumper
- 71. CHJA 0.90 M Jumper
- 72. CHJA 0.90 M Jumper
- 73. CHJA 1.00 M Jumper
- 74. CHJA 1.00 M Jumper
- 75. CHJA 1.00 M Jumper