



# Winter Chiller

MARCH 27-28, 2021

CHJA Approved  
At

*Hobby Horse Farms*



[www.HobbyHorseFarmco.com](http://www.HobbyHorseFarmco.com)

5220 Bella Rosa Parkway  
Firestone, Co 80504

**PreEntry DEADLINE:  
Thursday March 25,  
2021 at 2PM**

**Information: Kaite- 720-298-0908**

*Winter Chiller- March 27&28, 2021*

**Judge:** Kay Beard

**USEF Show Steward:** Celia Thomas

**Show Manager:** Kaite Lorentz  
720-298-0908

**Course Designer:** Jenny Alsberg

**Show Secretary:** Annette Cyboron  
720-341-5811

**Announcer:** TBD

**Paddock:** Emily Mcrae

**Stabling:** Fiona Wheelon 720-298-0908

**Veterinarian:** Elite Equine Sports Medicine  
Dr. Nancy Carr  
303-435-0333

**Farrier:** Juan Beruman  
303-246-5127

**EMT:** Mark Huff  
720-480-3429

**Concession:** What The Fork- Available 9am-5pm

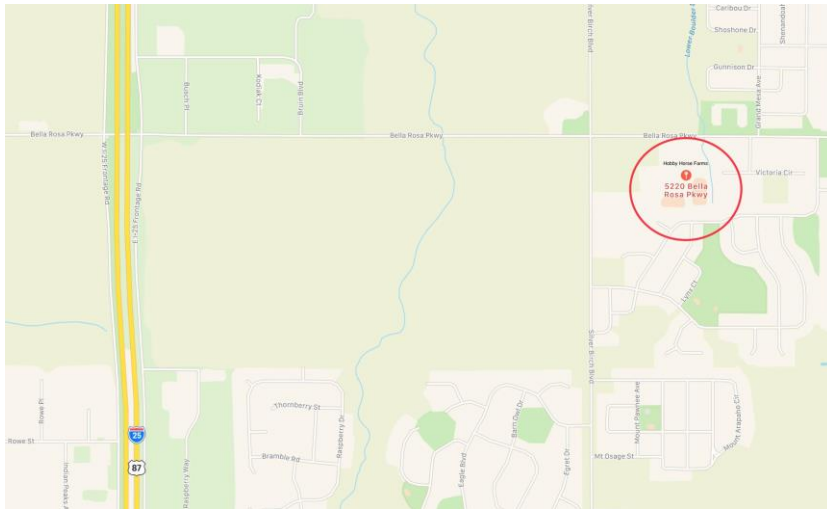
**Crew:** Hobby Horse Staff



## Location and Directions

### Hobby Horse Farms

5220 Bella Rosa Parkway  
Firestone Colorado  
80504



**Denver-** North on I-25, take Highway 52 exit east (right) to Silver Birch. Take Silver Birch north (left) to Bella Rosa Parkway (3rd stop sign). Take Bella Rosa Parkway east (right) to the first driveway on the right (Hobby Horse Farms).

**Boulder-** Highway 52 east to Silver Birch (1 mile east of I-25) and proceed as above.

**Ft. Collins-** South on I-25, take the Highway 119 exit and go 1 mile east (left) to Silver Birch. Take Silver Birch south (right) to Bella Rosa Parkway. Turn east (left) on Bella Rosa and turn right into the first driveway at Hobby Horse Farms.

**Longmont-**take Highway 119 east to Silver Birch and proceed as above from Ft. Collins

## WARNINGS

**WARNING:** Under Colorado Law, an equine professional is not liable for any injury to or the death of a participant in equine activities resulting from inherent risks of equine activities, pursuant to **Section 13-21-119**, Colorado Revised Statutes.

**Hobby Horse Farms, and Winter Chiller Show, will in no way be responsible for any loss, accident, or disease which may occur by fire or otherwise and it shall be a condition of entry that each exhibitor hold Hobby Horse Farms and Winter Chiller Show, harmless for any damage or loss that may occur to any animals, vehicles, or persons.**



### Class Specifications

All classes will be conducted in accordance with the current CHJA Rules & Specifications. USEF rules will govern in all instances except where CHJA specifications adjust for local situations.

-For complete CHJA class descriptions please refer to the 2021 CHJA Rule Book. For membership and horse recording forms. Please visit : [www.CHJA.org](http://www.CHJA.org)

### Show Rules

1. Regulated schooling will start at 6:30 am and will continue until 7:45am and will be permitted in designated areas ONLY. Management will supervise. Hard hats, and shoes or boots with distinctive heel, must be worn at all times by all exhibitors or riders while on horseback anywhere on the show grounds. Juniors must wear headgear which meets the USEF standards with harnesses secured. Courses will be posted and available one hour before the start of classes. One-minute gate and dotted line may be enforced.
2. No refunds will be given unless accompanied by a veterinarian's certificate. Non-showing horse policy: Only an EMT Fee and Office Fee will be charged if the horse schools and does not show.
3. All dogs must be leashed.
4. EMT will be present for schooling and the duration of the horse show.

5. Each class will award a first place prize and ribbons through 6 place. Champion and Reserve Champion will be offered in all divisions. Hunter Championships and Reserves will be awarded according to CHJA Rule 8.2C-D. Jumper Champion and Reserve Champion shall be awarded according to CHJA Rule 9.1C. Equitation Champion and Reserve Champion will be awarded according to CHJA Rule 10.1C-D.

6. Show management reserves the right to cancel, combine or divide any class or classes.

7. Hobby Horse Farms is a non-smoking facility, no smoking on the show grounds.

8. Class numbers, updates etc will be posted on the Hobby Horse Farms facebook page

9. HHF Main barn aisle is closed to boarders-only. Portable restrooms will be available on the grounds. Indoor arena access is available through the North Quonset.

10. A one-minute gate and/or a posted order-of-go may be imposed by management in order to maintain a reasonable pace for the show.

11. Water will not be available ringside, please pack your own provisions. Two Hydrants will be designated for show use and will have sanitizing spray available for use before and after using.

12. Refunds- No refunds will be made without a veterinarian's certificate after the class in question has begun.

### Stabling

A limited number of stalls are available. Masks will be required at all times in the Stabling area.

**Arrangements can be made with Kaite at 720-298-0908**



### *Biosecurity and health requirements*

It is Hobby Horse Farms policy to require a current health certificate (within 45 days) and current coggins (within the last calendar year) for all horses trailering onto the property. If there is an outbreak of an infectious disease, however, these policies will change depending on the disease's incubation period. Please stay updated via our website [www.HobbyHorseFarmCO.com](http://www.HobbyHorseFarmCO.com) , CHJA.org, and/or our Facebook page.

### *Footing*

Hobby Horse Farms has newly renovated indoor arena footing, an equi-blend designed for jumpers.

### *COVID-19 Guidelines*

1. Self-Monitor, take your temperature each morning. If you have a temp over 99.5 degrees or any COVID-19 symptoms, please stay home.
2. Staff will have temperatures taken each morning.
3. Face masks will be required by all those un-mounted
4. Riders will not be penalized for riding in face masks
5. Sanitization stations will be available and frequent sanitization of common grounds will be practiced.
6. Do your best to spread out, remember 6' social distancing guideline.
7. Limit your personal spectators.

8. Practice good hygiene, use hand sanitizer, wash your hands etc.
9. Water will not be available ringside, please make sure you bring water. Two Hydrants will be designated for show use and will have sanitizing spray available for use before and after using.
10. Rotations will set up with the Gate Person on a first come first served basis. If you miss your rotation, or do not sign up for one, you will ride at the end of the division.
11. The Gate Person has complete authority of the arena entrance and will manage the entrance to limit numbers
12. Trainer packets will be available in the Show office, one representative designated to pick packet up, and will be released when all entries have a check attached.

-Abiding by these guidelines will ensure the ability for the equestrian community to continue offering events. We Thank-You all for your patience, understanding and cooperation.



*Fees*

Checks payable to: **Hobby Horse Farms.**

<b>Classes</b>	\$25
<b>Medal Classes</b>	\$25
<b>EMT Fee per rider</b>	\$15
<b>Office Fee per entry</b>	\$25
<b>Stalls per day</b>	\$35
<b>Grounds Fee</b> (Charged to horses without a stall)	\$15
<b>Late Fee applied 2pm</b> <b>Thurs March 25, 2021</b>	\$25

- Grounds fee waived for horses stabled at Hobby Horse Farms
- Late fees are nonrefundable, but as classes are cancelled or asked to be filled, the charge for entered classes may be dismissed.
- Show scratches are not refunded the stall fee if they were present at the show and stalled there.
- Any returned checks must be paid in cash or certified funds within 10 days

*Horse Show Information*

Entries – one horse per entry blank.  
Any returned checks must be paid in cash or certified funds within 10 days and charged a \$45 returned check fee.  
**Please note: Entries must be received by Thursday, March 25, 2021, 2:00 PM to avoid the late fee.**  
Mail entries to:  
Hobby Horse Farms  
5220 Bella Rosa Parkway Firestone, CO 80504  
Or email entries to:  
[Events@HobbyHorseFarmCO.com](mailto:Events@HobbyHorseFarmCO.com)



*Class List*

**Saturday March 27 – 8:00 A.M.**

1. Red and Blue Warm Up
2. CHJA 2'3"-2'6" Hunter
3. CHJA 2'3"-2'6" Hunter
4. CHJA 2'3"-2'6" Hunter U/S
5. CHJA 2'6"-2'9" Hunters
6. CHJA 2'6"-2'9" Hunters
7. CHJA 2'6"-2'9" Hunter U/S

\*\*\* Will not start before 9:30 AM \*\*\*

8. CHJA Low Adult Hunter
9. CHJA Low Adult Hunter
10. CHJA Low Adult Equitation, O/F
11. CHJA Low Adult Equitation, O/F
12. CHJA Low Adult Equitation, Flat
13. CHJA Low Adult Hunter, U/S
14. Columbine Adult Medal

**Schooling break**

15. CHJA Low Children's Hunter
16. CHJA Low Children's Hunter
17. CHJA Low Children's Equitation, O/F
18. CHJA Low Children's Equitation, O/F
19. CHJA Low Children's Equitation, Flat
20. CHJA Low Children's Hunter, U/S
21. Columbine Junior Medal

**Schooling break**

22. CHJA Long Stirrup Hunter
23. CHJA Long Stirrup Hunter
24. CHJA Long Stirrup Equitation, O/F

25. CHJA Long Stirrup Equitation, O/F
26. CHJA Long Stirrup Equitation, flat
27. CHJA Long Stirrup Hunter, U/S
28. CHJA Long Stirrup Medal
29. CHJA Short Stirrup Hunter
30. CHJA Short Stirrup Hunter
31. CHJA Short Stirrup Equitation, O/F
32. CHJA Short Stirrup Equitation, O/F
33. CHJA Short Stirrup Equitation, flat
34. CHJA Short Stirrup Hunter, U/S
35. CHJA Short Stirrup Medal
36. CHJA Medium Stirrup Hunter
37. CHJA Medium Stirrup Hunter
38. CHJA Medium Stirrup Equitation, O/F
39. CHJA Medium Stirrup Equitation, O/F
40. CHJA Medium Stirrup Equitation, flat
41. CHJA Medium Stirrup Hunter, U/S
42. CHJA Medium Stirrup Medal

**Sunday March 28- 8 A.M.**

43. Red and Blue Warm Up—3'—3'5"
44. CHJA Adult Hunter 3'
45. CHJA Adult Hunter 3'
46. CHJA Adult Equitation 3', O/F
47. CHJA Adult Equitation 3', O/F
48. CHJA Children's Hunter 3'
49. CHJA Children's Hunter 3'
50. CHJA Children's Equitation 3', O/F
51. CHJA Children's Equitation 3', O/F
52. Colonel Robertson Medal
53. Dorothy Roberts Memorial Medal



- 54. CHJA Adult Equitation, flat
- 55. CHJA Children's Equitation, Flat
- 56. CHJA Adult Hunter, U/S
- 57. CHJA Children's Hunter, U/S
- 58. Ruth Ayers Medal
- 59. CHJA Adult Medal
- 60. CHJA Children's Medal

**\*\*\* Schooling break and course reset\*\*\***

**Jumpers will not start before 11**

- 61. Clear Round Jumper Warm-up
- 62. CHJA 0.75 M Jumper
- 63. CHJA 0.75 M Jumper
- 64. CHJA 0.75 M Jumper
- 65. CHJA 0.85 M Jumper
- 66. CHJA 0.85 M Jumper
- 67. CHJA 0.85 M Jumper
- 68. CHJA 0.90 M Jumper
- 69. CHJA 0.90 M Jumper
- 70. CHJA 0.90 M Jumper
- 71. CHJA 1.00 M Jumper
- 72. CHJA 1.00 M Jumper
- 73. CHJA 1.00 M Jumper
- 74. CHJA 1.10 M Jumper
- 75. CHJA 1.10 M Jumper
- 76. CHJA 1.10 M Jumper

Vendors that will be in attendance:

*Colorado Tack and Supply*

*Freedom Feather*

*HB Tack*